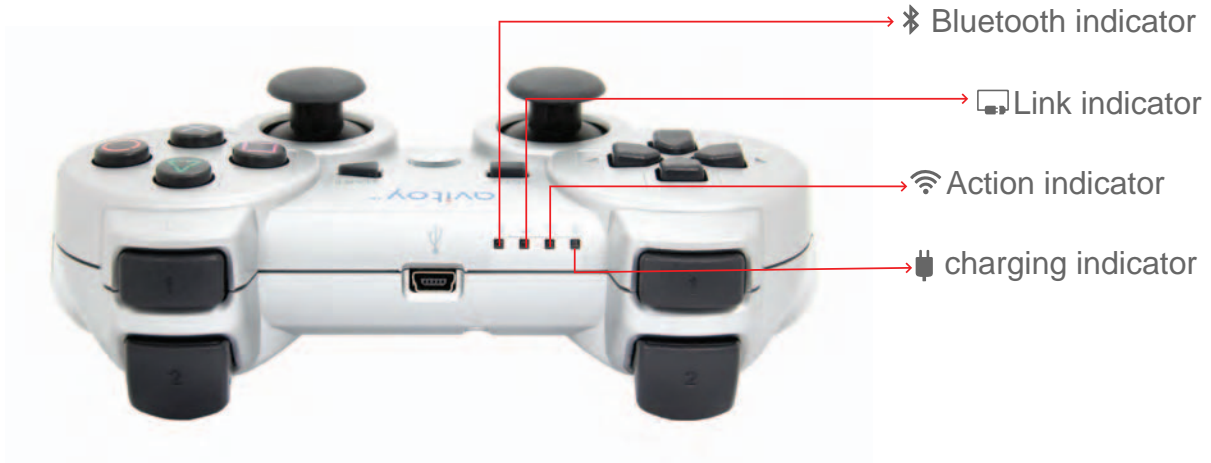


Description Of Avitoy Controller Key



Operation Guide

1. Lightly press “Power” button to turn on the controller. (When the controller is on, the Bluetooth indicator will stay on, while the Link indicator will keep flashing.)



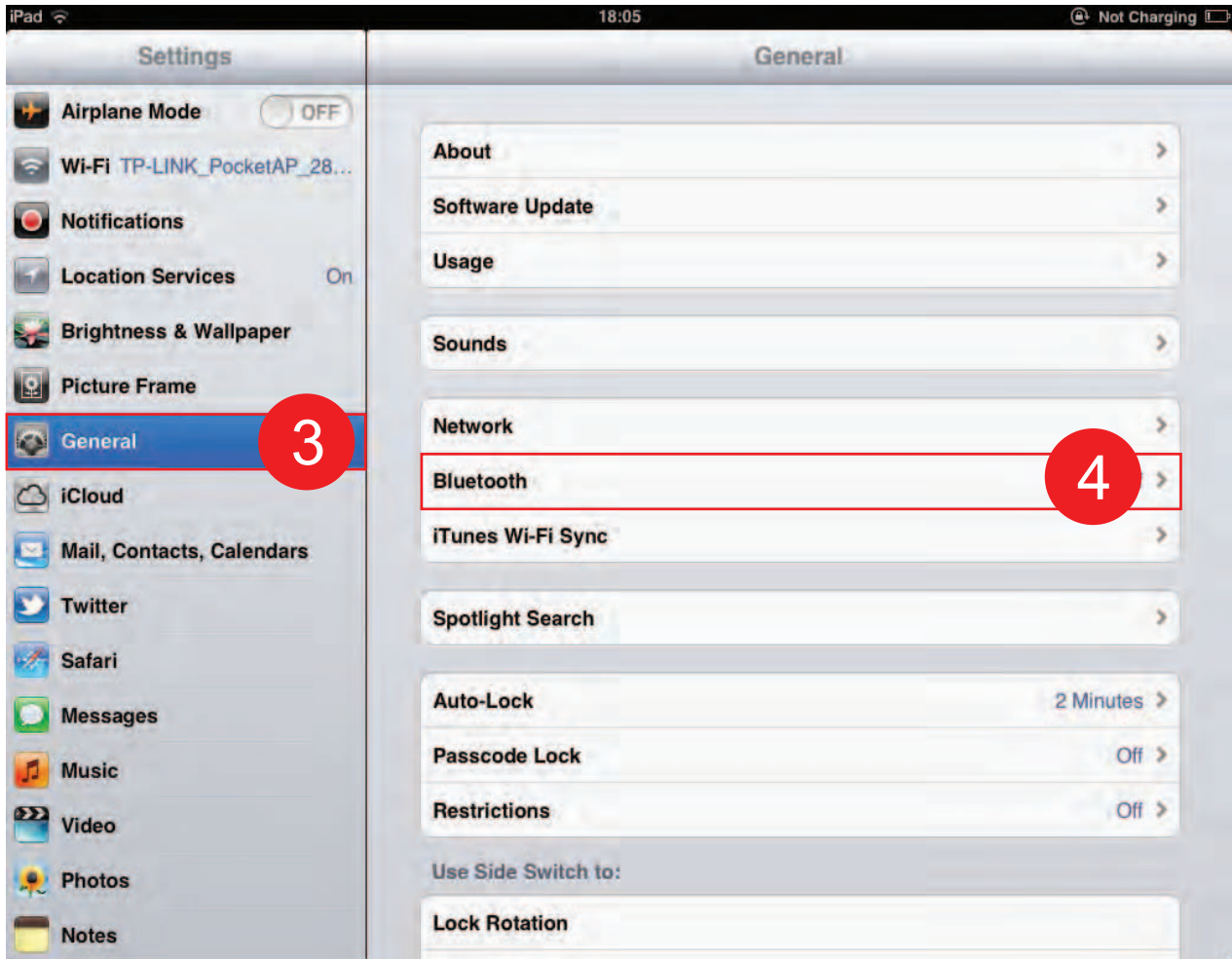
Operation Guide

2. Click “Settings” icon on the tablet interface to enter the setting interface.



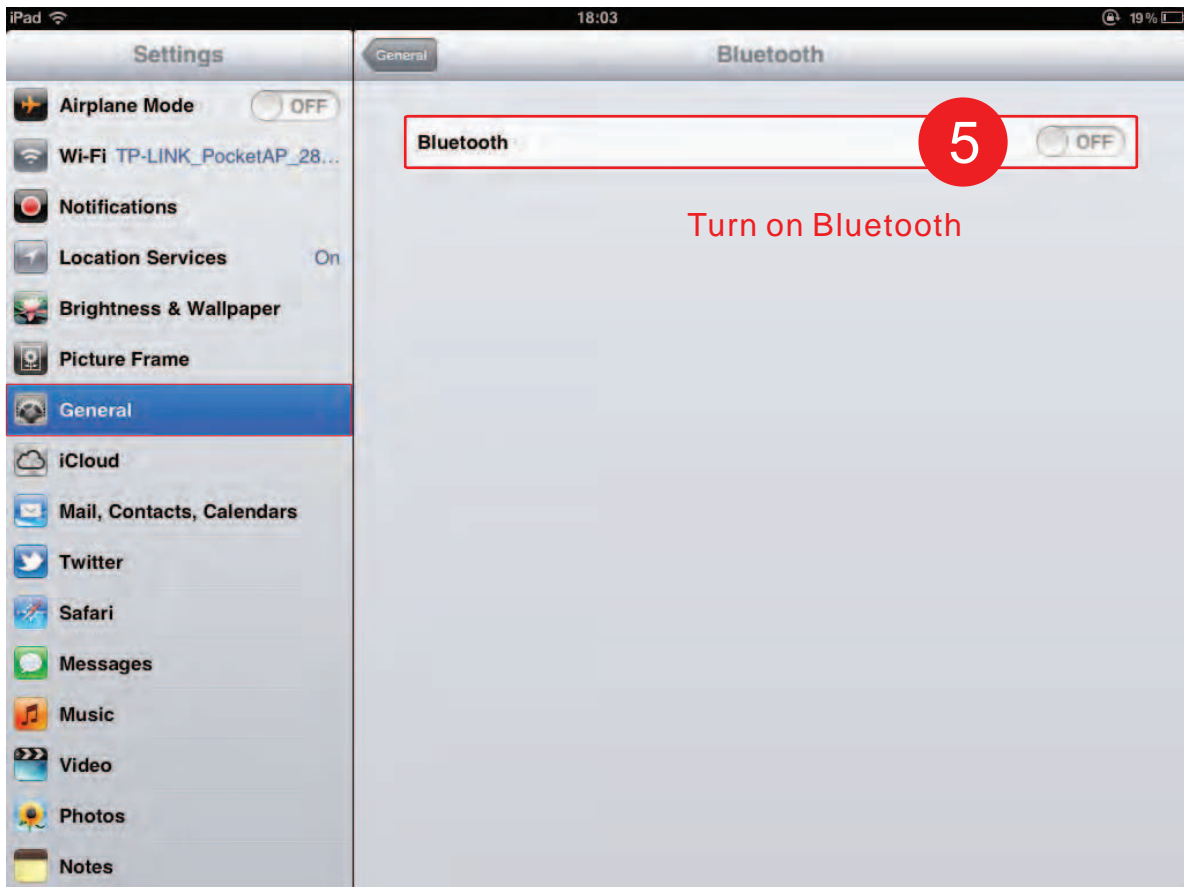
Operation Guide

3 & 4. Choose "General", and then Bluetooth.



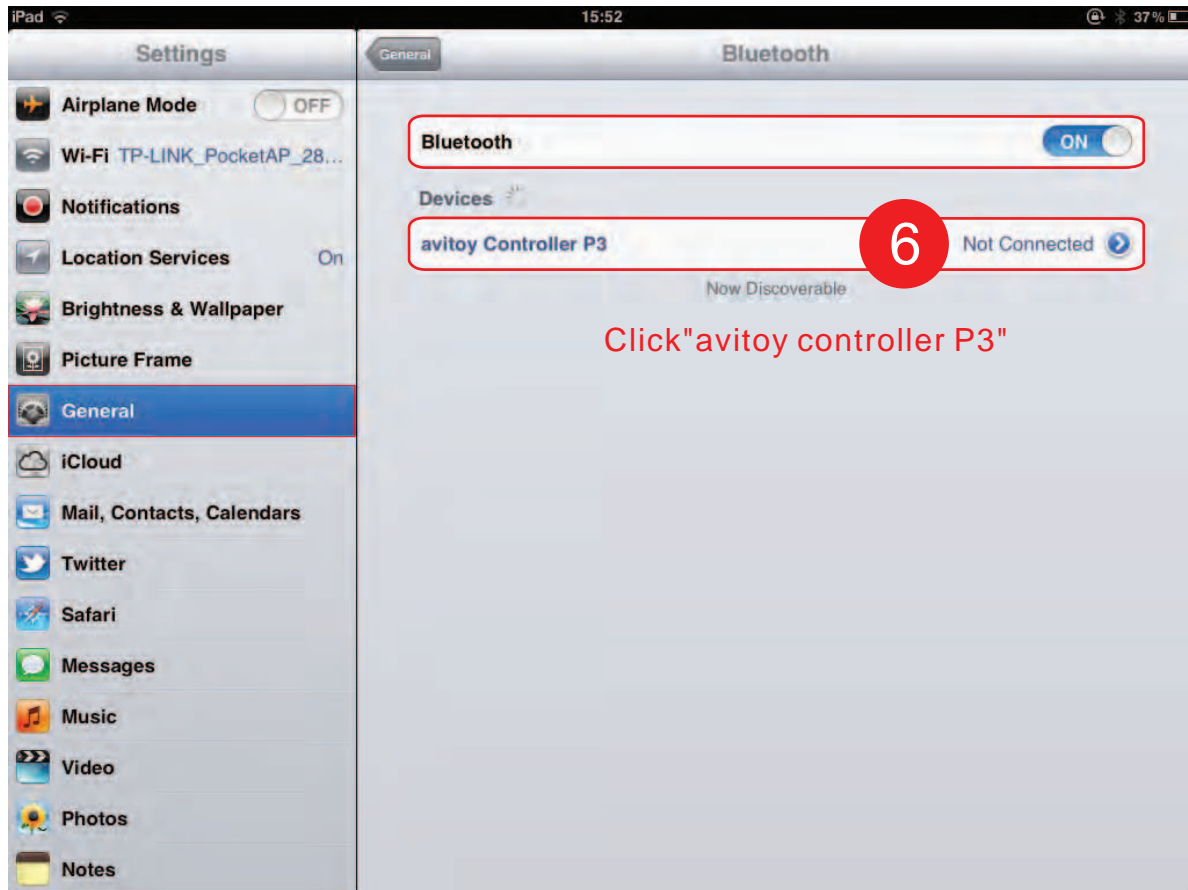
Operation Guide

5. Turn on Bluetooth. (then below will show the device: avitoy controller P3.)



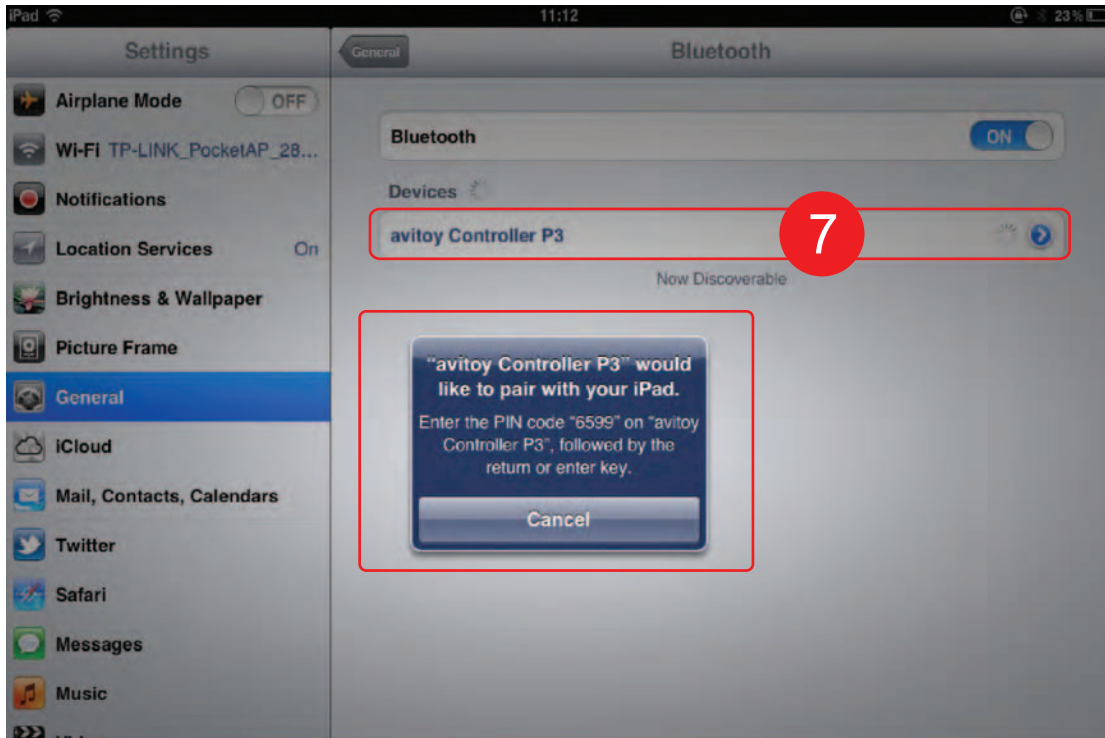
Operation Guide

6. Click “avitoy controller P3”



Operation Guide

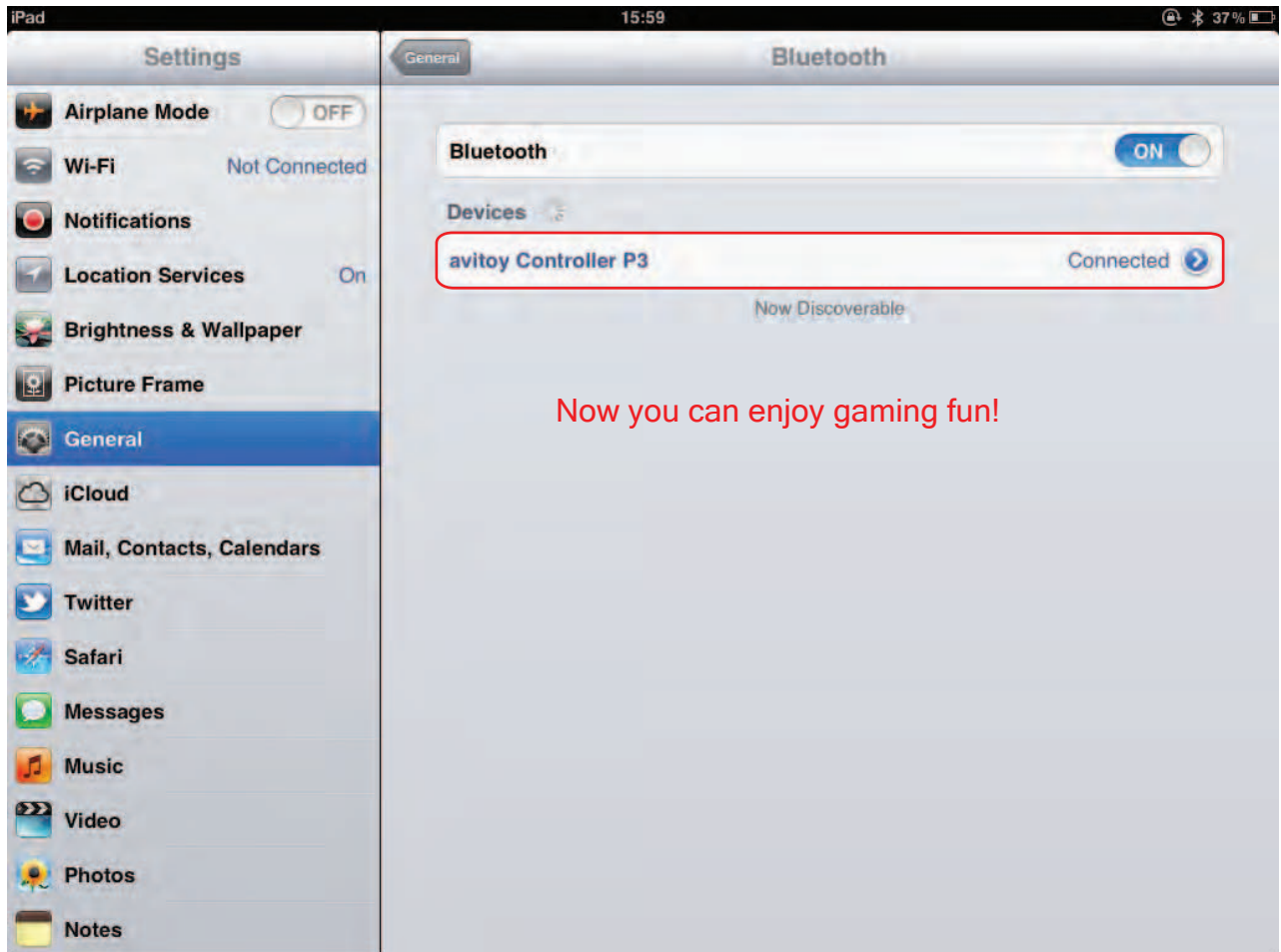
7&8. There will be a hint box, click the corresponding pin code on the controller buttons according to the hint, then press button "Start" on the controller.



8 Click the corresponding pin code on the controller buttons according to the hint, then press button "Start" on the controller.



Operation Guide



When the controller is connected to the tablet, the Link indicator will stay on, and “connected” will also be shown on the tablet screen just behind “avitoy controller P3”. Then when you press the buttons on the controller, the Action indicator will flash.

- ➔ Tips: The controller has the function of automatically linking to the tablet. When you operate the controller next time, there is no need to find Bluetooth pairing. It is easy and convenient. And if you want to remove Bluetooth pairing, you can press “power” and “setup” buttons at the same time.
- ➔ If you want to turn off the controller, press and hold “Power” button for about 2 seconds.
- ➔ In addition: If the controller could not control the actions of the game (such as Metal Slug 3), you need to press “home” button on the tablet, then enter the game again.